

TM

Oregon Museum of Science and Industry



OMSI is more than a museum.

We create learning experiences these walls can't contain — bringing science to as many people as possible, no matter who or where they are. OMSI believes our collective potential can be unlocked when curiosity, learning, and community unite. Our differences are what make us amazing, and we celebrate those who dare to question: the explorers, the tinkerers, the storytellers, and the innovators. Welcome to OMSI.

Our Mission & Vision

OMSI's mission is to inspire curiosity through engaging science learning experiences, foster experimentation and the exchange of ideas, and stimulate informed action.

Our vision is to collaborate with partners to ignite an education transformation at the intersection of science, technology, and design. We will weave a thriving innovation district into the fabric of Portland that spreads opportunities across the Northwest.

Our commitment to equity

OMSI is committed to working with partners and community members to include diverse perspectives in learning experiences and to dismantling systemic barriers by addressing disparities in our staffing, business practices, and public engagement. We participate in ongoing community conversations to evolve and create opportunities for all people to reach their full potential. We are committed to leading with racial equity.



Vision 2015-2035

Vision

OMSI, collaborating with partners, will ignite an education transformation at the intersection of science, technology and design, and weave a thriving innovation district into the fabric of Portland, that spreads opportunities across the Northwest.

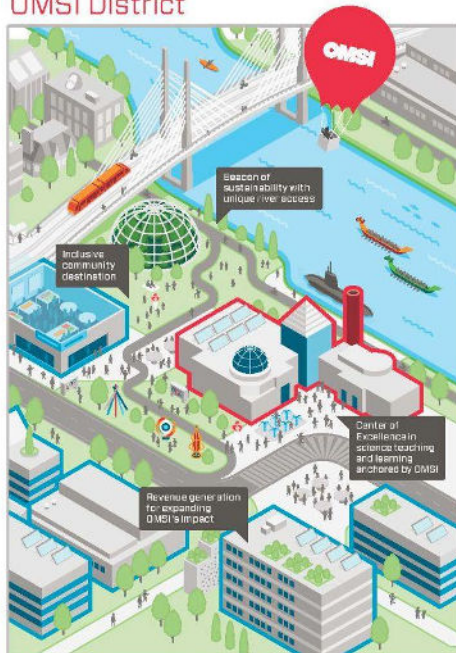


Mission

Inspire curiosity through engaging science learning experiences, foster experimentation and the exchange of ideas, and stimulate informed action.



OMSI District



The OSI District will be a playful, immersive place for the exchange of ideas and creative expression—among scientists, artists, engineers, teachers, inventors, and people from diverse backgrounds and cultures—that stimulate innovative problem-solving.

OMSI of the Future



OMSI experiences provide trailheads to deeper learning. OSI sparks curiosity through immersive experiences that cannot be replicated in schools or online. With the learner at the center, OSI orients people of all ages to paths to deeper engagement and connection through diverse programming and partnerships across the region.

Partners

We will build an ecosystem of communities and partners, creating mutually-beneficial relationships. OSI co-develops and curates content with partners, packages it into immersive experiences, and engages broad audiences.

Revolutionizing Science Learning

OSI will be a change agent in STEM education quality as traditional education systems are disrupted.

- We augment the established school system (through teacher training, pre-school, OSI science school).
- We reimagine full educational programming across public schools, a broad range of institutions, and engaged community actors.

Around the Region

Reaching beyond the museum campus through outdoor science camps, traveling programs, teacher professional development, and virtual connections, OSI is committed to accessibility across our region.

Equitable Impact

We dismantle barriers to equity and access to the experiences OSI provides and create welcoming environments where all people can reach their full potential. We lead with race.

Environmental and Climate Impact

We advance practices and policies to reduce harmful emissions, and educate and support communities to succeed in sustainability/climate action planning. We endeavor to achieve net zero carbon emissions.

New Revenue Model



New revenue streams support expanding capacity, and nimble, responsive business operations create value for our audiences.

Advocating Informed Action

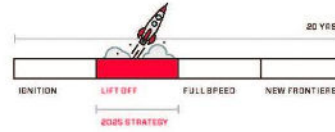
We advocate for science and technology literacy, scientific method, and evidence-based decision making to stimulate informed action. OSI uses its convening power to elevate dialogue about local and global challenges and uses STEM to create equitable community outcomes.



5 Year Strategy

OMSI's 5-Year Strategy defines the investment choices we will make and the associated outcomes we expect in the second 5 years of our 20 Year Vision. Annual roadmaps will detail specific milestones along our journey.

This second chapter in OMSI's 20 year vision is mission critical. We're ready for "LIFT OFF," sights set on the most ambitious parts of our vision. During these five years, we will make commitments and investments that change the trajectory of science education across the region and fundamentally alter the fabric of Portland's urban core.



Strategic Priorities

REIMAGINE BOUNDARIES



Visionary District Design



Waterfront Education Park



Programs Across the Region



Digital Learning

ADVANCE EQUITY AND INCLUSION



Culturally Inclusive Experiences



Partnerships Serving Communities



Internal Equity Action Focus



Affordability & Access

CATALYZE ACTION FOR COMPLEX CHALLENGES



Climate & Environmental Action



UN Global Goals & Local Problem Solving



Learning Research & Design



Empowering Early Childhood Teachers & Caregivers



Traveling Exhibits

BUILD TO LAST



Brand Story & Communications



Systems & Tools



Great Place to Work

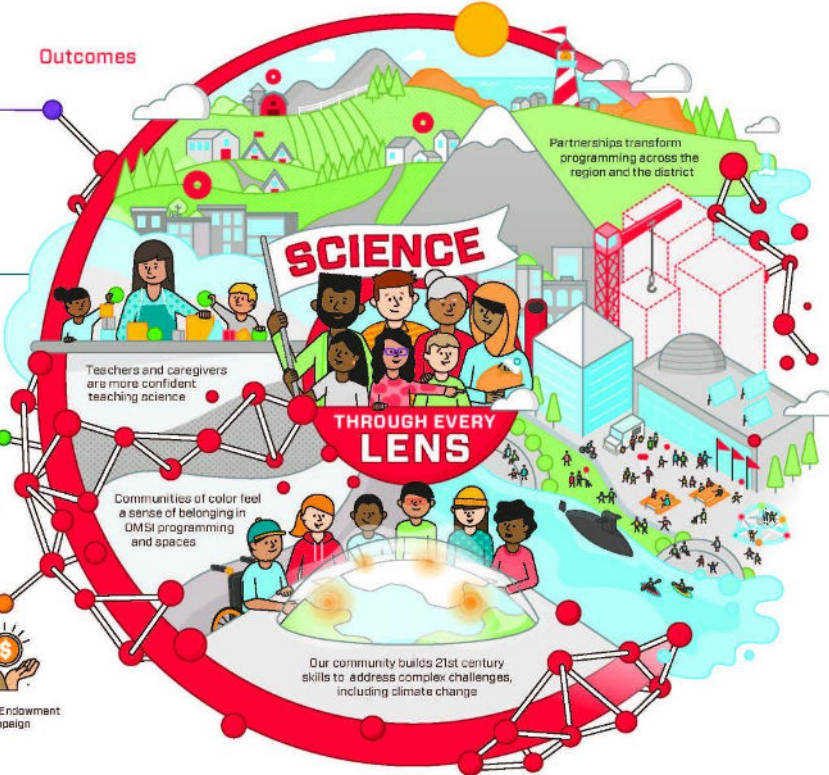


Sustainable & Inclusive Facilities



Capital & Endowment Campaign

Outcomes





OMSI'S ONGOING COMMITMENT TO EQUITY

OMSI is committed to including diverse perspectives in the learning experiences we provide, and dismantling systemic barriers by addressing disparities in our staffing, business practices, and public engagement. We invite community conversations to help us involve and create opportunities for all people to reach their full potential. We are committed to leading with race.



20 YEAR VISION

OMSI, collaborating with partners, will ignite an equitatorial transformation at the intersection of science, technology and design, one where a thriving innovation ecosystem is the fabric of Portland that spreads opportunity across the Northwest.



2020-2025 STRATEGY

OMSI's 5 Year Strategy defines the commitments and investments we will make and the associated outcomes we expect to achieve in the next 5 years as we build toward our 20 year vision goals. Annual reports will detail specific milestones along our journey.



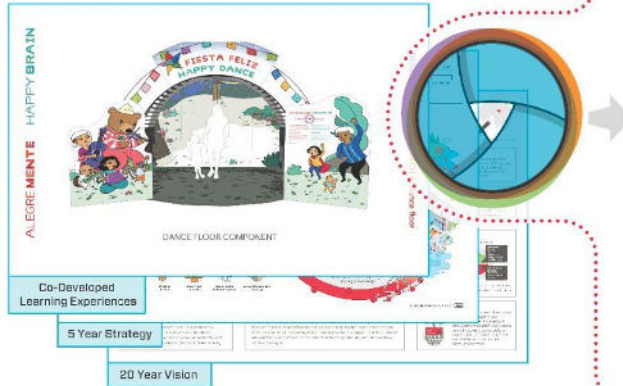
STRATEGIC VALUES

- Our People
- Collaboration
- Accessibility & Equity

CORE VALUES

- Learning
- Creativity
- Integrity
- Sustainability

1 WE APPLY AN EQUITY LENS TO ALL OF OUR WORK



2 CONVERSATIONS LEAD TO ACTIONS

Here's how we are committed to becoming an anti-racist, multicultural, and inclusive organization.



SYSTEMIC INTEGRATION

Improving OMSI's equity-related outcomes both internally and externally through changing our systems, processes, policies, and practices.

- Guest Experience
- Staff Experience
- Partnership Development



EQUITY ACTION FRAMEWORK



CAPACITY DEVELOPMENT

Establishing shared knowledge, attitudes, beliefs and values centered in equity.

- Anti-racist Institutional Identity
- Knowledge & Skills for Intersectional Analysis (consider all identity dimensions of a person in relation to socio-economic systems)
- Equity-driven Teamwork



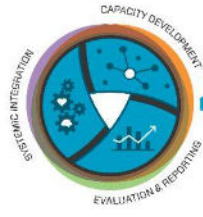
EVALUATION & REPORTING

Establishing benchmarks, measuring, and reporting on progress.

- Great Place to Work Survey
- OMSI Equity Climate Survey
- OMSI Key Outcome Indicators
- Department & Individual Goals

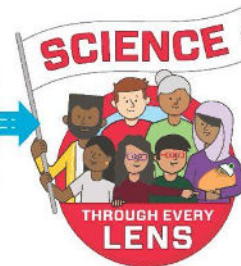
3 OUR LENS SCALES TO ANY SIZE DECISION

We want a culture of activism where both OMSI staff and community members identify and interrupt patterns in our systems that perpetuate inequities.



| | EXAMPLE SCENARIOS |
|--|--|
| DEVELOPING A STRATEGIC INITIATIVE STRATEGIC DECISION | Facilitate community engagement to understand needs and identify partners Co-create a shared vision for the initiative Lead an inclusive design process Jointly establish desired outcomes |
| DEVELOPING A NEW EXHIBIT OR PROGRAM PROGRAMMING/CLIENT EXPERIENCE DECISION | Identify people relevant to experience and target audiences Co-develop process for meaningful engagement Incorporate partner and audience voices in experience development process Co-settle our evaluation model to measure outcomes for our target audience |
| HIRING A NEW VENDOR TACTICAL DECISION | Develop a diverse pool of service providers Design a fair, equitable interview process D-board with a shared understanding of our values Agree upon outcomes and measures |

The cumulative effect of our actions adds up to a big overall impact.



OMSI's commitment to equity is vital to achieving our 20 year goals. Our 5 year strategic plans and operations will help us systematically evolve to become an anti-racist, multicultural and inclusive organization.

At times, we may improve in some areas and regress in others. We are confident that even our mistakes will generate knowledge necessary to improve our equity outcomes over time.

OMSI History

From the beginning, the idea of OMSI has inspired curiosity in generations of children and adults, and nurtured deep partnerships across the Northwest. Over the years, leaders, learners, and communities have come together at key moments to propel OMSI into the future and broaden our opportunities to engage children and families in hands-on science education. Our aspirations for the future grow from our rich legacy and deep appreciation for everyone who has made the OMSI of today possible. With community and partners, we look forward to continuing to grow and evolve.



1944: The Oregon Museum Foundation is established. This organization will eventually become the Oregon Museum of Science and Industry (OMSI).

1951: Alonzo Hancock hosts a geology summer camp in Clarno County outside of Fossil, Oregon. Camp Hancock still operates and welcomes curious minds to explore the high desert.

1967: The Kendall Planetarium opens at OMSI in Washington Park.

1972: OMSI creates its first traveling exhibition, *Atom-Magic*, and it tours nationally. In the following decades, OMSI grows to become a trusted provider of exhibitions for other science centers.

1994: The USS Blueback opens to the public.

1992: OMSI's new state-of-the-art science center on Water Avenue opens. The 219,000 square-foot facility includes a planetarium, OMNIMax theater and numerous exhibitions.

2004: OMSI opens two new exhibit halls, Science Playground and Innovation Station, providing brand new spaces and experiences for the youngest scientists. OMSI's business providing traveling exhibits to science museums across the country continues to grow.

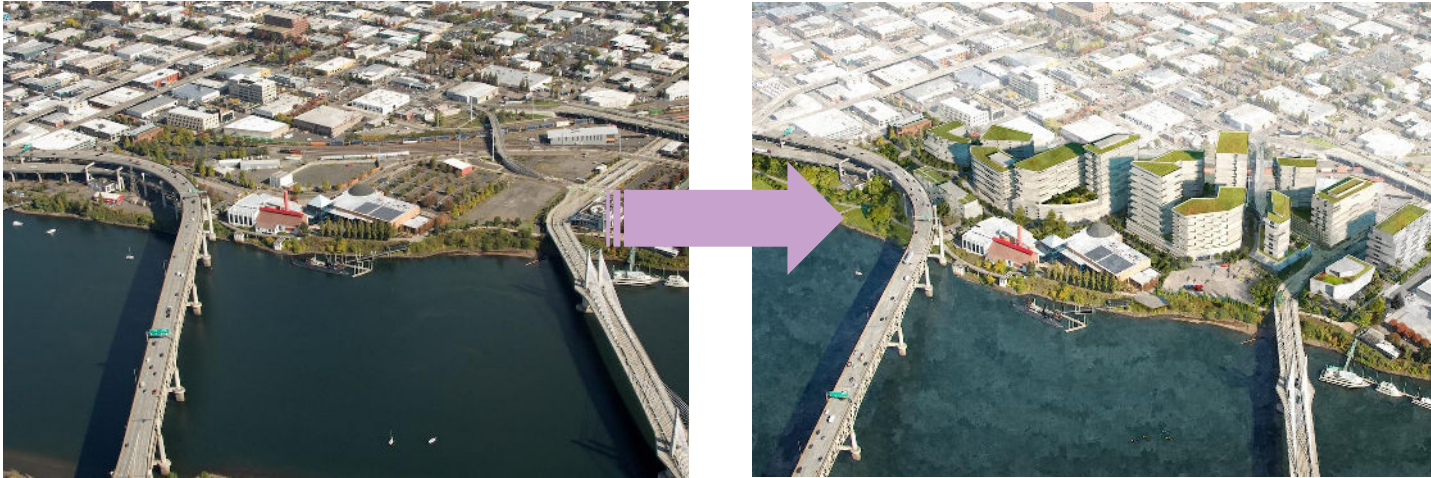
2016: OMSI supporters rally to fund the construction of Camp Gray in Newport, OR and the camp opens for its first summer season.

2017: The newly renovated Planetarium opens with a state-of-the-art projection system that interfaces with real-time data from NASA and NOAA

Future OMSI District

Vision

The OMSI District Plan is to create a one-of-a-kind neighborhood that is an inclusive community destination with innovation, arts, culture, and science learning at its heart. The OMSI District vision comes from a collaboration of local, Tribal and regional government entities, nonprofits, and businesses.



**In collaboration with partners,
OMSI's Master Plan will create a new
mixed-use District that is:**

- A community destination and inclusive neighborhood creating equitable public benefit.
- A hub for innovation, arts, and culture.
- A center for science learning and climate action, showcasing and advancing climate solutions through transportation, next-generation urban systems and technology, and OMSI science learning.
- A city economic growth driver and pillar of financial sustainability for OMSI and partners, enabling OMSI and partners to sustain and expand educational programming for diverse audiences.



Site components

- 24 acres of new, mixed-use transit-oriented development
- Up to 3 million square feet (sf) of new space to work, live, live, and play
- 1,200 units of new housing with a minimum of 20% affordable units
- New Waterfront Education Park
- Public plaza and event spaces
- Center for Tribal Nations, maker spaces, indoor and outdoor labs, festivals, and events with partners create an innovative public learning ecosystem
- Net zero carbon emissions and waste



OMSI District Partners

- Affiliated Tribes of Northwest Indians
- City of Portland
- Columbia River Inter-Tribal Fish Commission
- Metro Regional Government
- Portland Community College
- Portland General Electric
- Portland Opera
- State of Oregon

Museum Information

Contact Information

1495 SE Water Ave.
Portland, OR 97214

Phone: (503) 797-4999

Email: info@omsi.edu

Fall Museum Hours

Monday: Closed*

Tuesday – Friday: 9:30 am to 5:30 pm

Saturday: 9:30 am to 7:00 pm

Sunday: 9:30 am to 5:30 pm

*The museum is closed most Mondays, however we will be open on select Mondays when Portland Public Schools are closed.

Museum Admission

We are excited to welcome visitors to our Turbine Hall, reimagined Science Playground, and Natural Sciences Hall.

Adult (14+) \$19.00

Senior (63+) \$16.00

Youth (3–13) \$14.00

Infant (Under 3 years) Free

Ticket reservations required for all ages.

Buy tickets online at omsi.edu or at the front desk.

Specialty Shows and More

Submarine Tours

Get a sneak peek into the life on a real submarine.

Ages 3 and Up \$8.50

Members: Ages 3 and Up
\$7.50

Visitors must be 3 and older to access the submarine for safety reasons.

Planetarium Shows

See the universe like never before in the Pacific Northwest's premier planetarium.

Ages 3 and Up \$7.50

Members: Ages 3 and Up
\$6.50

Theater Shows

Big movies, giant screen. Documentaries and Hollywood favorites playing everyday.

Adult (14+) \$7.50

Youth (3-13) \$6.00

Senior (63+) \$6.50

Members:

Adult (14+) \$6.50

Youth (3-13) \$5.00

Senior (63+) \$5.50