

Inclusion from Within: Integrating from day uno.

OMSI

VERÓNICA NÚÑEZ
LEARNER EMPOWERMENT R&D
MANAGER EXHIBITS R&D

¡Bienvenidos y bienvenidas a la familia!

WHO WE ARE DEFINES OUR WORK AND HOW OTHERS PERCEIVE US.

Including a professional, fun, diverse and inclusive vision brings families together and builds trust in the communities we serve.



Team members

OUR TEAM IS OUR DNA!

OUR DIVISION IS COMPOSED BY 16 PEOPLE.

Most of the team members use she/her pronouns!



and a great number come from different backgrounds and walks of life, including countries like:

MEXICO, VENEZUELA, COLOMBIA, BOLIVIA, COSTA RICA AND CHILE.

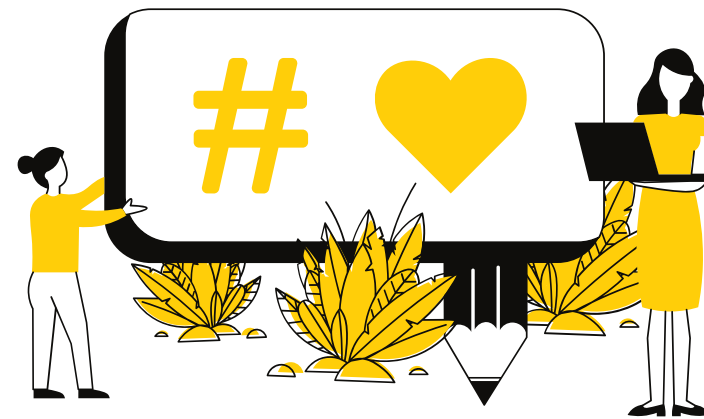
Why does having a diverse staff impacts on the museum's sustainability?



Motivates meaningful and diverse conversations.



Creates more opportunities to reach out to diverse communities



Collaboration between a multicultural team brings up different life visions to the museum and the projects we develop.



It makes us feel that inclusion is not just for visitors.



It ensures a more long-lasting relationship with the communities and a desire to collaborate and support the museums efforts.

Partnerships matter

CO-CREATION

We co-create with our partners and the community members from day 1 of each project.

LISTENING TO THE COMMUNITY

It's not just about listening or being heard, it's about seeing that the community partners really can make a difference in the decision making process of the museum.

HUMBLENESS

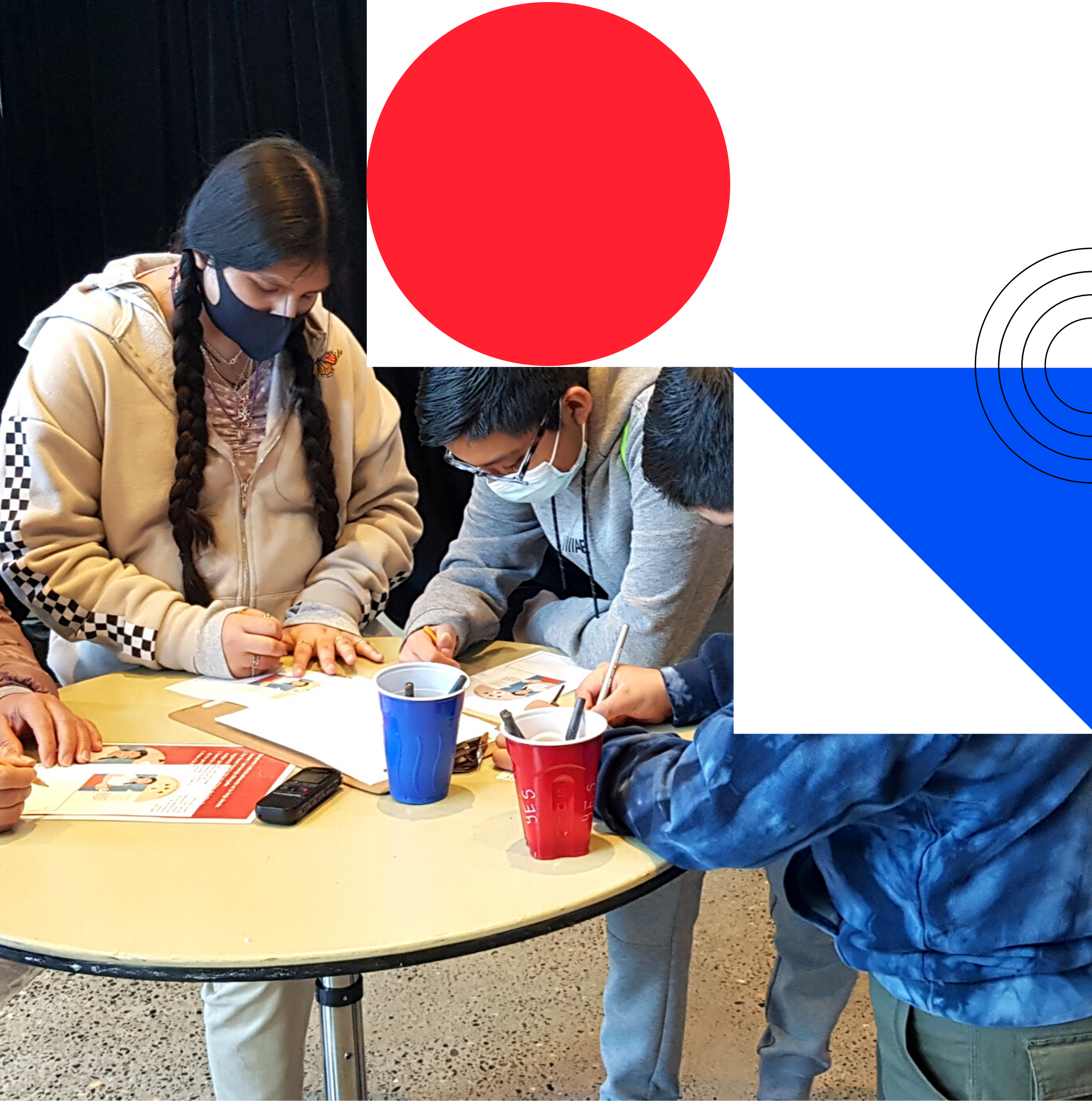
We have to listen and acknowledge our mistakes in order to repair and create meaningful partnerships.



WHAT OUR PARTNERS SAY

"We feel safe and happy to bring our community to OMSI because we know that the families will feel comfortable having Latinas that speak in Spanish with them. It is a way to make us feel at home".

LATINO NETWORK



**Some
examples of
how we
involve the
community**

OMSI TE INVITA A PARTICIPAR

OMSI es un museo interactivo que abre sus puertas a las comunidades para hablar, jugar y aprender sobre ciencias!

Para OMSI es muy importante contar con la comunidad Latina para diseñar las exposiciones y por eso queremos invitarles a participar de este proceso.



¿Cómo participar?

Te invitamos a OMSI para que hagamos una actividad en familia.

Sigue estos pasos:

1. Inscríbete en el link que te enviamos.
2. Ven a OMSI en alguno de los horarios propuestos.
3. Haz la actividad con nosotras.
4. Llévate tu regalo y disfruta del museo!

¿Quién puede venir?

¡TODA LA FAMILIA ESTÁ INVITADA!

Sabemos que tu tiempo es muy importante y por eso queremos agradecerte por participar en una de estas actividades **regalándote una entrada al museo para que disfrutes de OMSI en familia.**

¿Cuándo? ¡Escoge 1 de las 2 fechas y ven en el horario que prefieras!

Opción 1. Miércoles 31 de Marzo.
Escoge uno de estos horarios:

- 10:00 - 11 am
- 11:30 am - 12:30 pm

Opción 2. Sábado 3 de Abril.
Escoge uno de estos horarios:

- 10:00 - 11:00 am
- 11:30 am - 12:30 pm
- 2:00 - 3:00 pm
- 3:30 - 4:30pm

¿Tienes más preguntas o quieres más información?

Comunícate conmigo escribiendo a marango@omsi.edu o llamando al número 503-797-4501

TE ESPERAMOS!

OMSI INVITES YOU TO PARTICIPATE

OMSI is an interactive museum with open doors to diverse communities. Everyone is invited to participate, speak, play and learn about science here!

For OMSI it is very important to have the Latinx community involved in our design processes. This is why we want to invite you to participate in this activity!



How to participate?

Come to OMSI to participate in this family activity we have created for you.

Follow the instructions:

1. Subscribe to the link we sent you.
2. Come to OMSI in one of the proposed schedules.
3. Do the activity with us.
4. Ask for your thank-you gift ticket!

Who is invited?

ALL THE FAMILY IS INVITED!

We know that your time is very valuable and we want to thank you for participating in our activity **offering you tickets for you to enjoy OMSI with your family.**

When? Pick up 1 of the 2 days and come in any of the timeframes of your preference:

Option 1. Wednesday March the 31st.

- Pick one of the following times:
- 10:00 - 11:00am
 - 11:30 am - 12:30 pm

Option 2. Saturday April the 2nd.

Pick one of the following times:

- 10:00 - 11:00 am
- 11:30 am - 12:30 pm
- 2:00 - 3:00 pm
- 3:30 - 4:30pm

Do you have any other questions or want more information?

You can message me to marango@omsi.edu or call me at 503-797-4501

WE ARE WAITING FOR YOU!

1. Responde individualmente en la hoja donde tienes 1 personaje dibujado:
2. Por favor marca con un sticker de bolita lo siguiente: ¿Cuál de estos personajes te parece mejor para contar estas historias?
3. Toma la tarjeta 2.A. Responde y pégala en el lado de tu personaje favorita.
4. Pasa a la siguiente estación.

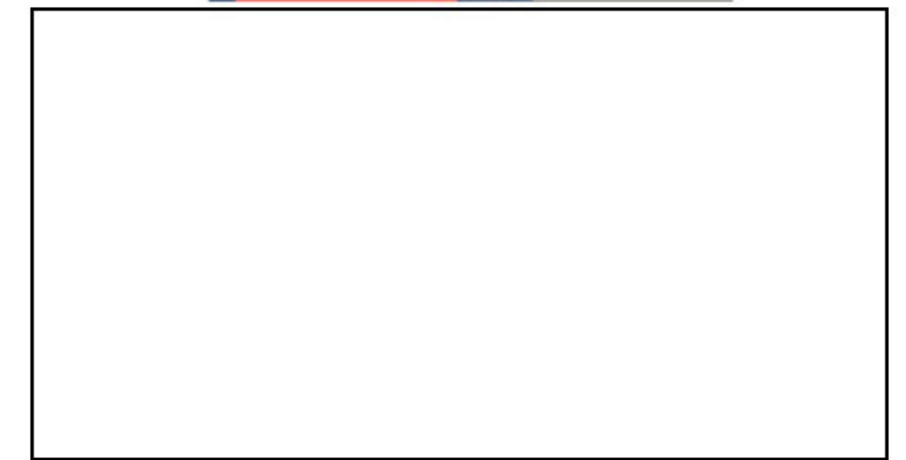


1. Answer individually to the page with the character and answer to the questions in the same paper.
2. Tell us which of these styles you like best for those stories. Pick one and place your round sticker on the character.
3. Pick up the card 2.A. Write your answer on the card and place it on the character.
4. Move to the next spot.

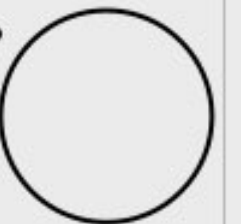


Take a look at this image.
Would you say this represents the story of a real person, or a made up character?
Why?

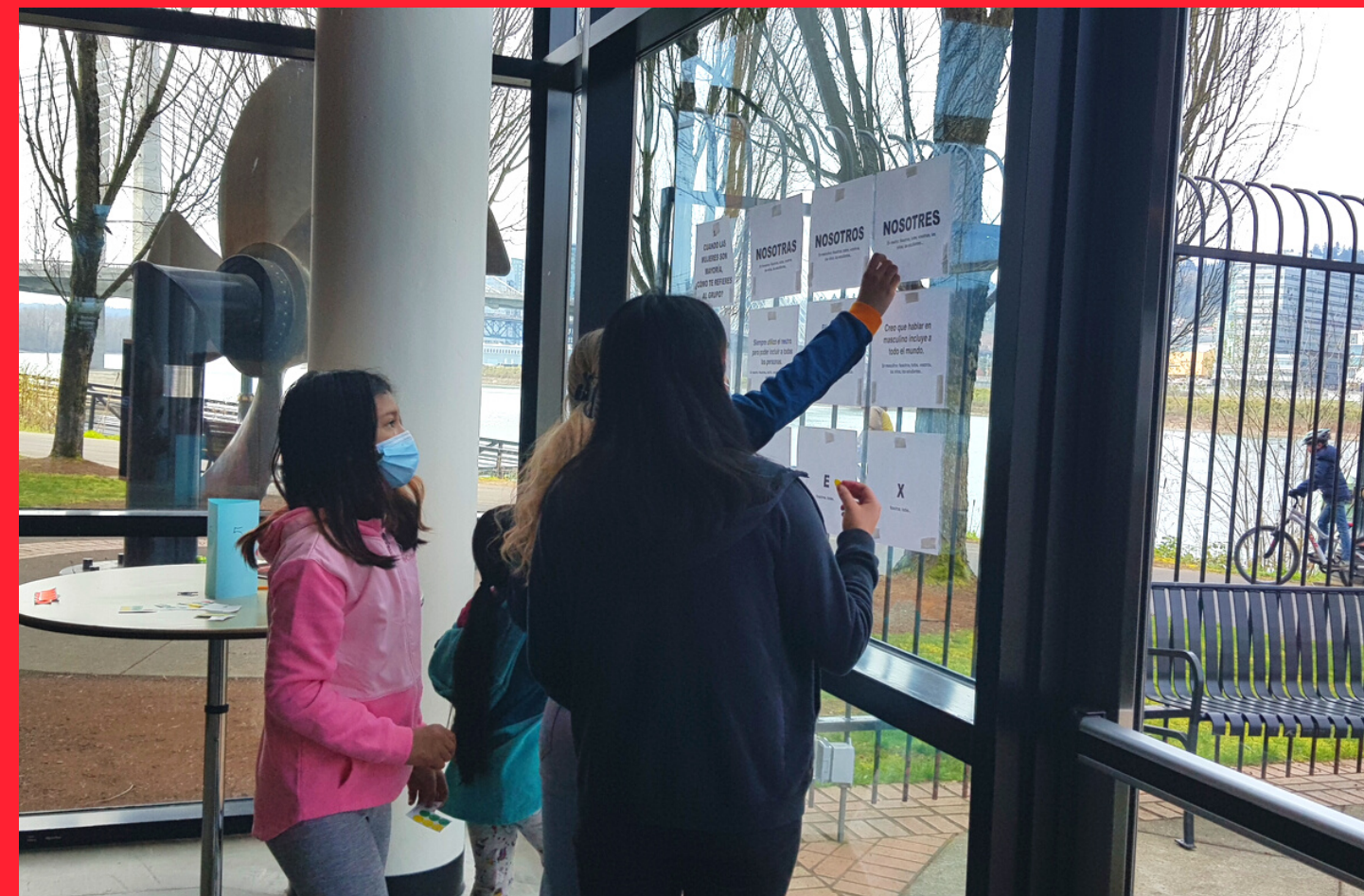
Mira esta imagen.
¿Crees que ella representa la historia de una persona real o es una historia ficticia?
¿Por qué?



What do you like about your chosen character?



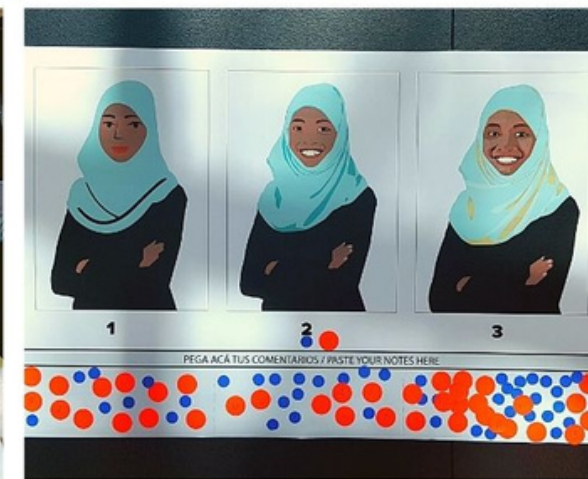
¿Qué te gusta de tu personaje favorita?



Stay in touch with the community

OMSI tickets were sent to every participant with a thank you card.

The organizations received the thank you card as well and each one of them expressed positive experiences from the families and interest in continue to collaborate with future evaluation activities.



¡GRACIAS! THANK YOU!

Gracias por haber hecho parte de este proceso de evaluación. Esperamos tenerles de nuevo en el museo para seguir construyendo y creando en comunidad.

Thank you for your participation on this evaluation process. We look forward to having you back at the museum so we can continue this creative journey together as a community.





Gracias for believing!

NOW IS TIME FOR ALL
OF US TO BUILD TEAMS
THAT ARE INCLUSIVE,
DIVERSE AND
EMPOWERING!

This material is based upon work supported by the National Science Foundation under Grant No. DRL-1811617. Any opinions, findings, and conclusions or recommendations expressed in this material are those of the authors and do not necessarily reflect the views of the National Science Foundation.